

VGA to HDMI Converter

User's Manual

**www.ableconn.com
support@ableconn.com**

Table of Contents

SAFETY INSTRUCTIONS	2
COPYRIGHT.....	2
TRADEMARKS.....	2
REGULATORY COMPLIANCE	3
FCC CONDITIONS	3
CE.....	3
WEEE INFORMATION.....	3
INTRODUCTION	4
FEATURES.....	4
PACKAGE CONTENTS.....	5
PRODUCT OVERVIEW.....	6
SPECIFICATION	7
CONNECTION	9
RESOLUTION CONFIGURATION	10
TECHNICAL SUPPORT	12

Before attempting to connect, operate or adjust this product, please save and read the User's Manual completely. The style of the product shown in this User's Manual may be different from the actual unit due to various models.

Safety Instructions

Always read the safety instructions carefully:

- ◆ Keep this User's Manual for future reference
- ◆ Keep this equipment away from humidity
- ◆ If any of the following situation arises, get the equipment checked by a service technician:
 - The equipment has been exposed to moisture.
 - The equipment has been dropped and damaged.
 - The equipment has obvious sign of breakage.
 - The equipment has not been working well or cannot get it to work according to the User's Manual.

Copyright

This document contains proprietary information protected by copyright. All right are reserved. No part of this manual may be reproduced by any mechanical, electronic or other means, in any form, without prior written permission of the manufacturer.

Trademarks

All trademarks and registered trademarks are the property of their respective owners or companies.

Regulatory Compliance

FCC Conditions

This equipment has been tested and found to comply with Part 15 Class B of the FCC Rules. Operation is subject to the following two conditions: (1) This device may not cause harmful interference. (2) This device must accept any interference received and include interference that may cause undesired operation.

CE

This equipment is in compliance with the requirements of the following regulations: EN 55 022: CLASS B

WEEE Information

For EU (European Union) member users: According to the WEEE (Waste electrical and electronic equipment) Directive, do not dispose of this product as household waste or commercial waste. Waste electrical and electronic equipment should be appropriately collected and recycled as required by practices established for your country. For information on recycling of this product, please contact your local authorities, your household waste disposal service or the shop where you purchased the product.

Introduction

The VGA to HDMI Converter is a high performance single port converter, compliant with the VGA standard. The product allows the user to convert and transmit the video signals from the VGA embedded device, such as laptop, smart phone, tablet or PC, to the HDMI embedded device, such as projector. In addition, the converter is capable of receiving the audio signals along with the VGA signals. Last but not least, slim design makes the converter handy to carry and brings the user great mobility experience.

- *Incorporates HDMI[®] technology.*

Features

- ◆ Mini-sized and stylish design
- ◆ VGA to HDMI function
 - VGA + Audio input detection
 - HDMI output detection
- ◆ Compliant with HDMI specification
- ◆ High resolution up to 1920x1080p@60Hz pixels
- ◆ Support audio jack input

Package Contents

- ◆ VGA to HDMI Converter x1
- ◆ USB cable x1
- ◆ User's Manual x1

Product Overview



Item	Description
VGA Connector	Connect to input the source from the VGA enabled device
Audio Jack	Connect to input the audio source
HDMI Connector	Connect to output the signals to a HDMI embedded display device
Micro USB Connector (Power in)	Connect to an available USB connector on a computer to charge the power

Specification

Item	Description	
Connector	Video Input	VGA Female Connector *
	Audio Port	3.5mm stereo jack
	Video Output	Standard HDMI Female Connector (A-Type)
Video	Resolution	640x480@60 1280x720p@60 720x480p@60 1280x1024@75 800x600@60 1600x1200@60 1024x768@60 1920x1080p@60
	Color Depth	16 Bits
	Power Supply**	Bus-powered ** Self-powered (DC 5V)
	Power Consumption	Max. 650mW at 1080p
	Physical Properties	Housing
Dimension		55(L)x55(W)x16.5(H)mm
Weight		29.5g approx.
Working Environment	Operation Temperature	10°C ~40°C
	Storage Temperature	-20°C ~70°C
Compliance	CE, FCC	

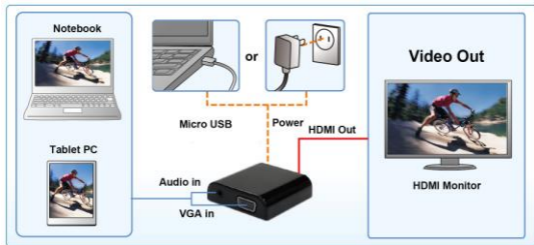
**If the VGA output signals of your video source are not compliant with the VESA standard, the video source may not be displayed properly.*

***If the device does not work properly with bus power, please connect the external power to the device.*

Connection

Follow the instructions below to check and connect your mobile device to a display.

- ◆ Make sure the source device is equipped with VGA port.
- ◆ Make sure the terminal device is equipped with HDMI port.
- ◆ **Connect the power first** to make sure the device work properly. *(If the device does not work properly with bus power, please connect the external power to the device.)*
- ◆ Prepare a HDMI male to male cable to connect the HDMI end to a terminal device. *(Note that this cable is not supplied)*
- ◆ Prepare a VGA male to male cable to connect the VGA end to a source device. *(Note that this cable is not supplied)*



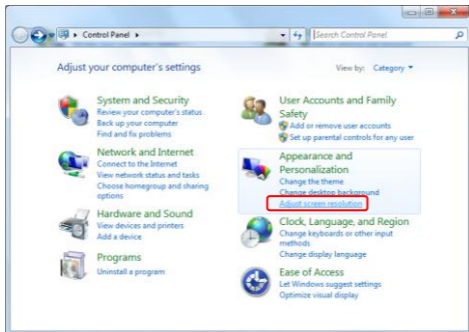
Resolution Configuration

With plug and play feature, the adapter will automatically detect the resolution of the display device once plugged in. If the default settings do not match the resolution, you can select or adjust the settings following the instructions below.

**Actual strings depend on your operating system. The screen shots are from Windows® 7 and might vary slightly for each operating system.*


Windows® 7/ Windows® 8/ Windows® 10

Step 1. Go to Start\Control Panel\Appearance and Personalization\Adjust screen resolution



Step 2. Adjust **Resolution** to the desired value.

Change the appearance of your displays



Display: 2. Display device on: VGA

Resolution: 1920 x 1080 (Recommended)

Orientation: Landscape

Multiple displays: Extend these displays

Make this my main display [Advanced settings](#)

[Make text and other items larger or smaller](#)

[What display settings should I choose?](#)

OK Cancel Apply

Technical Support

If you have any technical or application issues about our products, please email us:

support@ableconn.com or visit our website:

<http://www.ableconn.com>

VGA to HDMI Converter
User's Manual



V1.0